

# AFRAID to TRADE

overcoming stock market fears *with* Corey Rosenbloom



## Weekly Inter-market Technical Report

### Summary Chart

	TREND STRUCTURE							
	Primary	Intermediate	Short-Term	Money Flow				
10-Year Note	UP	UP	UP	IN				
SP500	UP	UP	UP	IN				
Gold	DOWN	UP	UP	IN				
Crude Oil	DOWN	DOWN	UP	IN				
US Dollar	UP	DOWN	DOWN	OUT				
	SHORT-TERM TARGET				INTERMEDIATE-TERM TARGET			
	LAST*	UPSIDE	DOWNSIDE	KEY LEVEL	UPSIDE	DOWNSIDE	KEY LEVEL	
10-Year Note	125	130	122	127	131	122	124	
SP500	2576	Unlimited	2,400	2,455	Unlimited	2400	2400	
Gold	1294	1,400	1320	1200	1400	1300	1300	
Crude Oil	56.71	55	40	45	60	40	50	
US Dollar	95.57	105	90	92.5	105	90	92.5	

# Intraday Intermarket



Volatility Remains!

Continue to monitor the Risk-ON and Risk-OFF money flow patterns in our landscape.

We of course have the THANKSGIVING HOLIDAY week ahead (Market Closed Thursday and open half-day Friday) so we don't expect much movement/volatility during the holiday week.

Do make a note that the stock market has a historical tendency to RISE during this week in what we call "Bullish Drift" and we'll expect that pattern to continue unless proven otherwise.

# 10-Year Treasury Notes (\$UST – Price)

## Monthly



Bonds remain in a **longer-term uptrend** until proven otherwise beneath the 121.50 level. We've had plenty of pullbacks on the Monthly Chart, all of which served as valid pro-trend retracement (buy) opportunities especially since the beginning of 2017.

Focus on the WEEKLY CHART and the critical EMA target overlap area just here at 125 as price dips just beneath this critical make-or-break support pivot. Note the Dom/Alt Thesis levels.

## Weekly



We saw stocks continued to rally strongly through the end of Q3 and now the beginning of Q4 on a reversal bounce up away from the 124 pivot.

We hit the weekly target of the 20/50 EMA crossover - this will form the foundation for the trading tactics next week. While we could see a pause here, any firm breakout above 125 is the dominant thesis that keeps the bull market in bonds going toward 128 or higher.

Bonds are beneath the critical EMA overlap pivot but will turn bullish on a break above this level - and we'll be watching it on the Daily Chart for trading bonds.



## Daily



Target achieved! A TRIANGLE pattern now forms. Our short-term target - the 125 pivot level - was achieved as price formed a reversal candle from the 125 target and traded quickly beneath it last week.

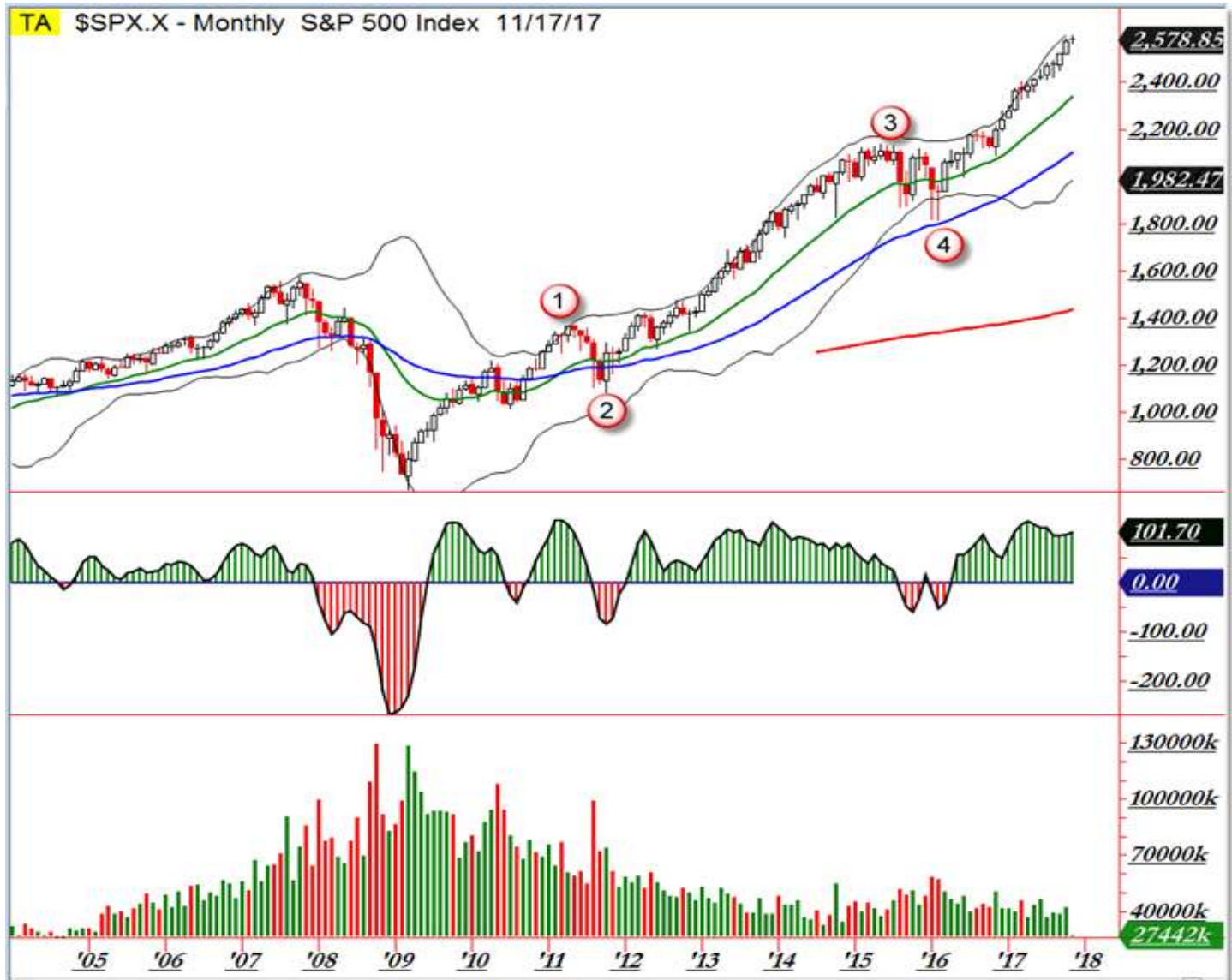
Here's the quote from last week that plays into the holiday week ahead:

*For next week, we'll expect a likely pullback down away from 125 - Note the red/green price pathways and targets to play for on the departure from 125.15.*

Again, note your yellow (neutral) and green/red price pathways for your trades.

# US S&P 500 (\$SPX)

## Monthly



Stocks pushed and closed at new all-time highs near 2,590 in a continued short-squeezed breakout in the ongoing late or ending THIRD WAVE of a likely final (long-term) primary fifth wave toward 2,600. We're overbought but extending multiple months higher in a **strong, multiple timeframe uptrend** - and we'll focus on lower timeframes for the week ahead as usual. Note how FAR extended price is from the 20 month EMA near 2,400 which only notes caution in an overbought market, not bearishness. With the recent similar price action, there's no change. We remain in a strong impulse with minimal pullbacks, underscoring the strength of the current Wave 3 unfolding of 5 (meaning the market has higher to run).

## Weekly

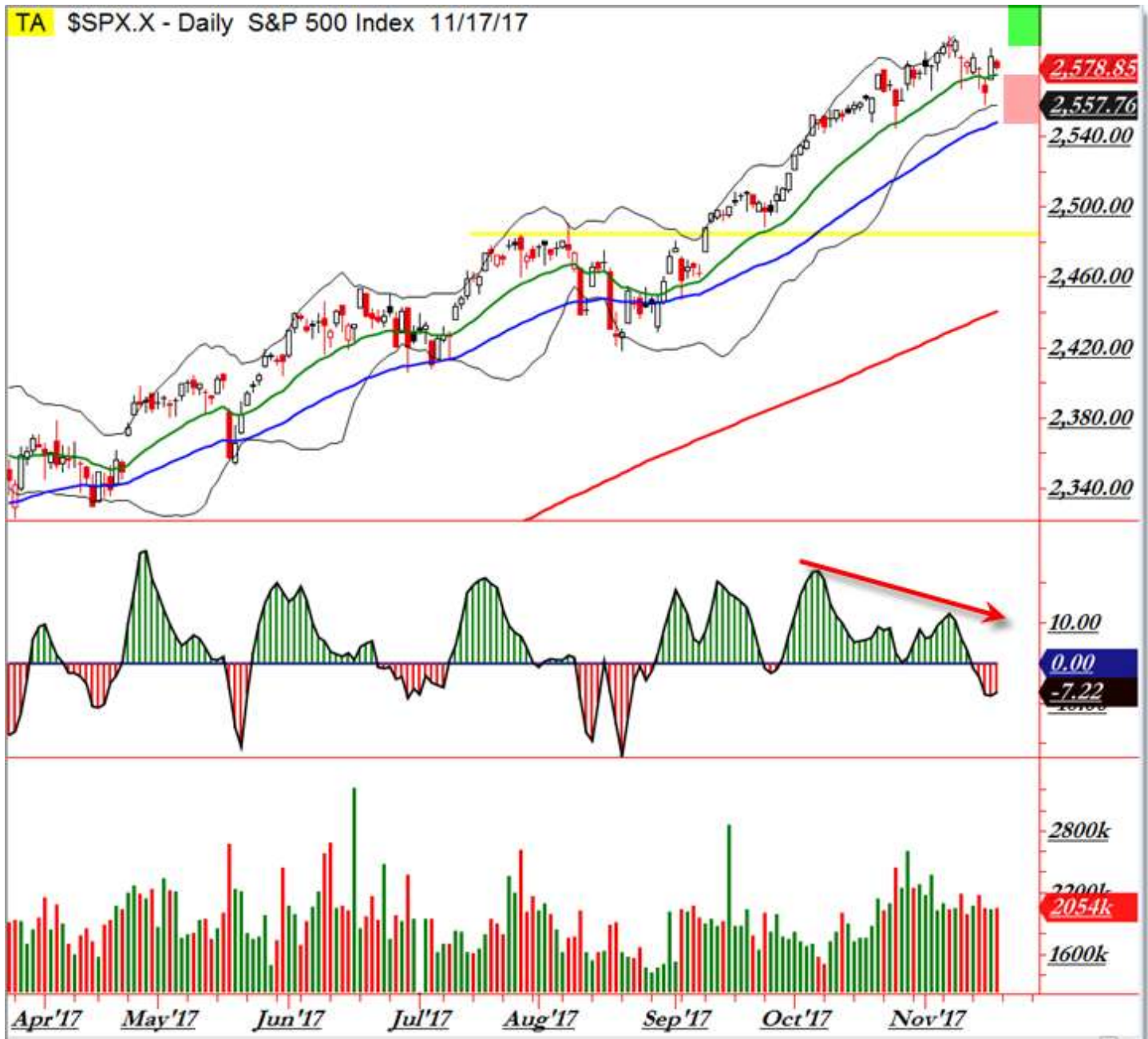


The Weekly Chart reminds us that **we remain in a rising trend on ALL timeframes, making us bullish until proven otherwise**. For simple strategy planning, play the DEPARTURE from 2,580 as we've done at recent similar levels. Should price support on the Daily EMA, 2,600 is in play and is likely while price is above 2,580.

We keep playing this extended bull market while it lasts, knowing it won't last forever. It's a unique situation but the market does continue defying traditional wisdom by refusing to give even a small pullback. It does increase the odds of a larger/violent snap-back in the future so please be careful however you are choosing to trade this overextended /divergent situation.



## Daily:



After a quick snap-back pullback to the rising 20 day EMA target, buyers intervened again and overpowered sellers (bears) to close the week at 2,578 beneath yet another new all-time high in this ongoing bull market. EXPECT a BULLISH DRIFT for the Thanksgiving holiday week.

Again this situation - an extended low volatility 'creep' higher - will end but UNTIL it ends, assume it will continue toward 2,600 or higher. Don't short this market while we're above the rising moving averages, particularly the 20 day EMA near 2,470. We always assume trends will continue and that core principle has repeatedly kept us on the right side of this unusual move.



# Gold

## Monthly



Gold broke out of our sideways trend recently, allowing aggressive traders to play the breakout swing UP AWAY FROM the \$1,300 known resistance target. Price then played up toward our \$1,370 target and we used it as our departure point to play the bearish DEPARTURE (retracement) from this level. We expected - and played - the bullish departure UP AWAY FROM our weekly and daily targets as noted as gold retraced last week.

## Weekly



Price broke OUT OF our range with a \$50+ point (so far) surge away from \$1,300 pivot, officially reversing the intermediate trend back to UP/BULLISH. That's an important thing to note because the next thing that occurred was a steep four-week pullback toward support.

Note that Gold continues to trade with bonds and - at times - against (inverse) the stock market's rally. Keep that theme in mind as gold challenges a key support/buy level toward the \$1,300 pivot. Gold and Bonds have been trading together as RISK-OFF markets and with price at the midpoint, note the daily chart targets and price pathways.

## Daily



With stocks surprising to the upside, Gold fell toward new swing lows and played "bearishly" beneath the \$1,300 pivot to the retest spot and 61.8% Fibonacci Retracement (our pivot).

Here we are! At support for ANOTHER week with the same plan as last week. Play the immediate departure from \$1,265 noting the green and red price pathways as price compresses between key daily moving averages and remains - for now - above the 200 day SMA. We're RANGE NEUTRAL between \$1,265 and \$1,300 (Fibonacci and price pivots).

Gold had a stellar close to the week at the \$1,300 pivot which is the key to planning our next swing (note the price pathways).



# WTI Crude Oil (\$WTIC)

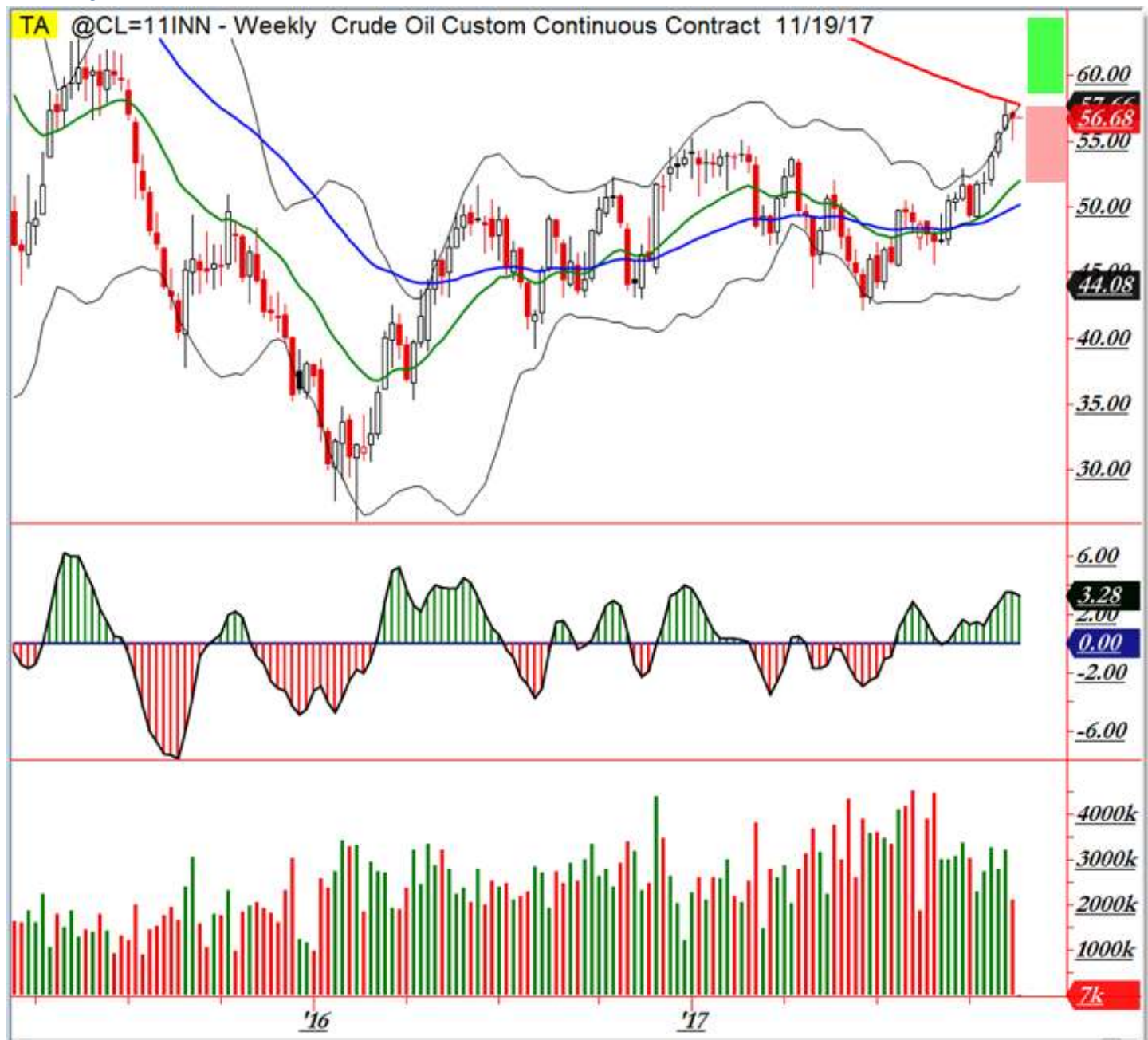
## Monthly



Negative divergences set the stage for the logical sell-swing down away from the \$54.00 level which was our key overhead resistance (successfully achieved) upside target.

As always, start with the Weekly Chart and note key levels and plans - including targets for the retracement toward weekly and daily target support. Oil remains in a longer-term sideways trend with bullish overtones as we challenge a resistance target high at \$60 currently.

## Weekly



Use both the Weekly and Daily charts to form your targets and trades as price moves **ABOVE THE HIGH of this weekly range** with pivot target near \$60.00. Note that the current \$55.00 level is the newly achieved (correct analysis!) swing high target.

Follow your DAILY CHART with price pushing TOWARD the \$60 target on schedule/as expected.

Note the upside target extends just beneath \$60 though price challenges the 200 SMA into the \$57.00 level. Note your Daily Chart pivots and targets in this bullish uptrend (new).

## Daily



In the context of a wider trading range (see weekly and monthly charts), Oil recently traded up toward the resistance target near \$55.00 (on negative divergences) toward the overlapping Daily and Weekly EMA target levels at the \$49.00 pivot. It did hit the rising 20 day EMA target at \$51.00 and then broke into a major bullish swing toward the current \$57.00 high.

Like Gold last week, Gold had a stellar bullish surge up away from the rising 20 day EMA at \$56.00 and closes the week near the high, and thus the uptrend continues.



# US Dollar Index (\$USD)

## Monthly



FINALLY after a sustained multi-month sell swing (while stocks rallied without stopping), the Dollar found support just beneath the 92.00 pivot and is (so far) rallying UP AWAY FROM this target.

Targets have been achieved on all timeframes so update your positions here in the Dollar.

## Weekly



We're finally seeing the expected (overdue) upward action toward - and now ABOVE - our falling 20 week EMA.

Last week we saw a FLAT week BENEATH our 50 week EMA target as price challenges the 200 week SMA at critical pivot near \$93.50 with the upper Bollinger Band near 95.50. Use this and the 20 week EMA at 94.00 for your trade planning as we focus on the Daily Chart.

## Daily



The Dollar is at a critical MAKE or BREAK PIVOT at the \$93.50 level.

It's the 20 and 50 day EMA overlap with the support of the lower Bollinger Band.

Note the BEARISH BREAKDOWN pathway beneath 93.00 toward 91.25's prior low but UNTIL THEN, we have price at the "edge of the cliff" bullish support pivot with a likely bullish swing up to develop - and if so, trade bullishly through and above 94.00 toward 96.00 in the future.



*Disclaimer:*

All information is from sources deemed to be reliable, but there is no guarantee to the accuracy. Information is for educational purposes only and is not intended to give specific trading advice. Past performance is no guarantee of future performance. Investment/ trading carries significant risk of loss and you should consult your financial professional before investing or trading. Your financial advisor can give you specific financial advice that is appropriate to your needs, risk-tolerance, and financial position. Neither Corey Rosenbloom nor Afraid to Trade was compensated in any way by any of the broad markets, stocks, or securities discussed in this report. Corey Rosenbloom is compensated by the sale of this report and not by any underwriter or dealer associated with these markets. Opinions are based on widely-accepted methods of technical analysis including the Elliott Wave Principle, Oscillators/Indicators, Candle-charting analysis, Volume, Fibonacci, and other methods of analysis. No specific recommendation is given to buy, hold, or sell any of these markets/securities or exchange traded funds related to these markets. Neither Corey Rosenbloom nor Afraid to Trade is a Registered Investment Advisor. Long-term investment success relies on recognizing probabilities in price action for possible future outcomes, rather than absolute certainty – risk-management is critical for success. Error and uncertainty are part of any form of market analysis.